

TECHNICAL MANUAL
ORGANIZATIONAL DIRECT SUPPORT, AND
GENERAL SUPPORT
MAINTENANCE REPAIR PARTS AND SPECIAL
TOOLS LISTS

(INCLUDING DEPOT MAINTENANCE REPAIR
PARTS AND SPECIAL TOOLS)
FOR

ECHO BOX TS-488A/UP

(NSN 6625-00-519-7594)

HEADQUARTERS, DEPARTMENT OF THE ARMY
01 FEBRUARY 1978

**ORGANIZATIONAL, DIRECT SUPPORT, AND GENERAL
SUPPORT MAINTENANCE**

**REPAIR PARTS AND SPECIAL TOOLS LISTS
(INCLUDING DEPOT MAINTENANCE REPAIR PARTS AND SPECIAL**

TOOLS)

FOR

**ECHO BOX TS-488A/UP
(NSN 6625-00-519-7594)**

Current as of 7 October 1977

REPORTING OF ERRORS

You can improve this manual by recommending improvements using DA Form 20282 (Test) located in the back of the manual. Simply tear out the self-addressed form, fill it out as shown on the sample, fold it where shown, and drop it in the mail. If there are no blank DA Forms 2028-2 (Test) in the back of your manual, use the standard DA Form 2028 (Recommended Changes to Publications and Blank Forms) and forward to the Commander, US Army Electronics Command, ATTN: DR-SELMA-Q, Fort Monmouth, New Jersey 07703. In either case a reply will be furnished direct to you.

Table of Contents

		Page	Illus Figure
SECTION	I. Introduction	1	
	II. Repair parts list	5	
GROUP	00. Echo Box TS-488A/UP	5	1
	01. Antenna bracket assembly	7	2
	02. Cable Assembly CG-92A/U	9	3
	03. Case assembly	11	4
	04. Panel assembly	13	5
	0401 Piston assembly	17	6
	0402 Waveguide assembly	19	7
	0403 Tuning drive assembly.....	21	8
SECTION	III. Special tools list (Not applicable)		
	IV. National stock number and part number index	23	

This manual supersedes TM 11-6625-220-24P, 27 February 1976.

SECTION I

INTRODUCTION

1. Scope

This manual lists spares and repair parts; special tools; special test, measurement, and diagnostic equipment (TMDE), and other special support equipment required for performance of organizational, direct support, and general support maintenance of the TS-488A/UP. It authorizes the requisitioning and issue of spares and repair parts as indicated by the source and maintenance codes.

2. General

This Repair Parts and Special Tools List is divided into the following sections:

a. *Section II. Repair Parts List.* A list of spares and repair parts authorized for use in the performance of maintenance. The list also includes parts which must be removed for replacement of the authorized parts. Parts lists are composed of functional groups in numeric sequence, with the parts in each group listed in figure and item number sequence.

b. *Section III. Special Tools List.* Not applicable.

c. *Section IV. National Stock Number and Part Number Index.* A list, in National item identification number (NIIN) sequence, of all National stock numbers (NSN) appearing in the listings, followed by a list, in alphameric sequence, of all part numbers appearing in the listings. National stock numbers and part numbers are cross-referenced to each illustration figure and item number appearance.

3. Explanation of Columns

a. *Illustration.* This column is divided as follows:

(1) *Figure number.* Indicates the figure number of the illustration on which the item is shown.

(2) *Item number.* The number used to identify item called out in the illustration.

b. *Source, Maintenance, and Recoverability (SMR) Codes.*

(1) *Source code.* Source codes indicate the manner of acquiring support items for maintenance, repair, or overhaul of end items. Source codes are entered in the first and second positions of the Uniform SMR Code format as follows:

<i>Code</i>	<i>Definition</i>
PA	--Item procured and stocked for anticipated or known usage.

<i>Code</i>	<i>Definition</i>
XD	- A support item that is not stocked. When required, item will be procured through normal supply channels.

NOTE

Cannibalization or salvage may be used as a source of supply for any items source coded above except those coded XA and aircraft support items as restricted by AR 700-42.

(2) *Maintenance code.* Maintenance codes are assigned to indicate the levels of maintenance authorized to USE and REPAIR support items. The maintenance codes are entered in the third and fourth positions of the Uniform SMR Code format as follows:

(a) The maintenance code entered in the third position will indicate the lowest maintenance level authorized to remove, replace, and use the support item. The maintenance code entered in the third position will indicate one of the following levels of maintenance:

<i>Code</i>	<i>Application/Explanation</i>
O	- Support item is removed, replaced, used at the organizational level.
H	- Support item is removed, replaced, used at the general support level.

(b) The maintenance code entered in the fourth position indicates whether the item is to be repaired and identifies the lowest maintenance level with the capability to perform complete repair (i.e., all authorized maintenance functions). This position will contain one of the following maintenance codes:

<i>Code</i>	<i>Application/Explanation</i>
H	- The lowest maintenance level capable of complete repair of the support item is the general support level.
Z	- Nonreparable. No repair is authorized.

(3) *Recoverability code.* Recoverability codes are assigned to support items to indicate the disposition action on unserviceable items. The recoverability code is entered in the fifth position of the Uniform SMR Code format as follows:

<i>Recoverability codes</i>	<i>Definition</i>
Z	- Nonreparable item. When unserviceable, condemn and dispose at the level indicated in position 3.

Recoverability

codes *Definition*

H – Reparable item. When uneconomically reparable, condemn and dispose at the general support level.

c. *National Stock Number.* Indicates the National stock number assigned to the item and will be used for requisitioning purposes.

d. *Part Number.* Indicates the primary number used by the manufacturer (individual, company, firm, corporation, or Government activity), which controls the design and characteristics of the item by means of its engineering drawings, specifications, standards, and inspection requirements to identify an item or range of items.

NOTE

When a stock numbered item is requisitioned, the repair part received may have a different part number than the part being replaced.

e. *Federal Supply Code for Manufacturer (FSCM)* The FSCM is a 5-digit numeric code listed in SB 708-42 which is used to identify the manufacturer, distributor, or Government agency, etc.

f. *Description.* Indicates the Federal item name and, if required, a minimum description to identify the item.

g. *Unit of Measure (U/M)* Indicates the standard of the basic quantity of the listed item as used in performing the actual maintenance function. This measure is expressed by a two character alphabetical abbreviation (e.g., ea., in., pr., etc.). When the unit of measure differs from the unit of issue, the lowest unit of issue that will satisfy the required units of measure will be requisitioned.

h. *Quantity Incorporated in Unit.* Indicates the quantity of the item used in the breakout shown

on the illustration figure, which is prepared for a functional group, subfunctional group, or an assembly.

4. Special Information

The following publications pertain to the TS-488A/UP and its components:

TM 11-6625-220-10, Echo Box TS-488A/UP

TM 11-6625-220-25, Echo Box TS-488A/UP

5. How to Locate Repair Parts

a. When National stock number or part number is unknown.

(1) *First.* Using the table of contents, determine the functional group within which the item belongs. This is necessary since illustrations are prepared for functional groups and listings are divided into the same groups.

(2) *Second.* Find the illustration covering the functional group to which the item belongs.

(3) *Third.* Identify the item on the illustration and note the illustration figure and item number of the item.

(4) *Fourth.* Using the Repair Parts Listing, find the figure and item number noted on the illustration.

b. When National stock number or part number is known.

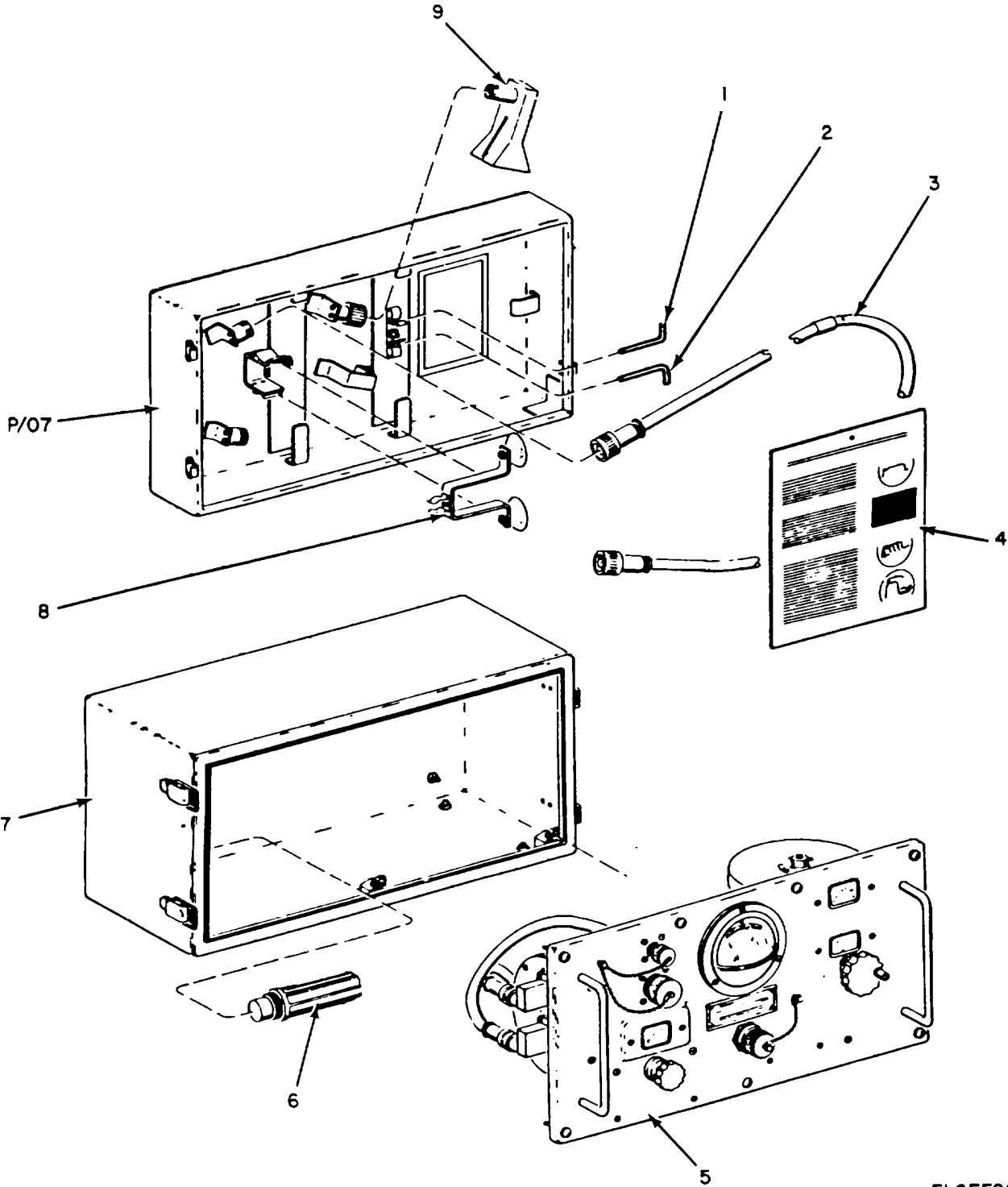
(1) *First.* Using the Index of National Stock Numbers and Part Numbers, find the pertinent National stock number or part number. This index is in NIIN sequence followed by a list of part numbers in alphameric sequence, cross-referenced to the illustration figure number and item number.

(2) *Second.* After finding the figure and item number, locate the figure and item number in the repair parts list.

6. Abbreviations

Not applicable.

(Next printed page is 4)



ELOEF001

ELOEF001

Figure 1. Echo Box TS-488A/UP.

SECTION II

TM 11-6625-220-24P

(1) ILLUSTRATION		(2)	(3)	(4)	(5)	(6) DESCRIPTION	(7)	(8)
(a) FIG NO.	(b) ITEM NO.	SMR CODE	NATIONAL STOCK NUMBER	PART NUMBER	FSCM	<i>USABLE ON CODE</i>	U/M	QTY INC IN UNIT
						GROUP 00 ECHO BOX TS-488A/UP		
1	1	XDOZZ		G2103-7088-1	00341	WRENCH,ALLEN	EA	1
1	2	XDOZZ		G2103-7088-2	00341	WRENCH, ALLEN	EA	1
1	3	PAOHH	5995-00-272-9118	CG92AU	81349	CABLE ASSEMBLY.....	EA	1
1	4	XDOZZ		G2103-7126	00341	CHART,TROUBLESHOOTING	EA	1
1	5	XDHHH		G2103-7224	00341	PANEL ASSEMBLY.....	EA	1
1	6	PAOZZ	6685-00-641-8526	MS3397-11	96906	PLUG, CRANKCASE DEHYDRATOR.....	EA	1
1	7	XDHHH		G2103-7229	00341	CASE ASSEMBLY.....	EA	1
1	8	XDOHH		G2103-7230	00341	ANTENNA BRKT ASSY	EA	1
1	9	PAOZZ	5985-00-241-6701	AT63U	80058	ANTENNA,PICKUP	EA	1
					5			

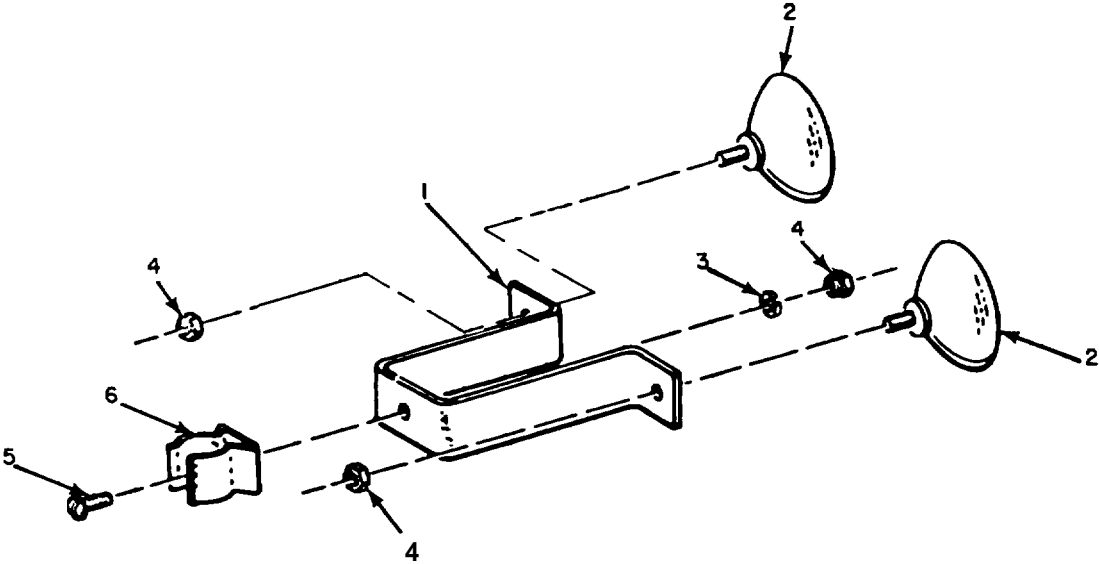


Figure 2. Antenna Bracket Assembly.

LOEF002

SECTION II

TM 11-6625-220-24P

(1) ILLUSTRATION		(2)	(3)	(4)	(5)	(6)	(7)	(8)
(a) FIG NO.	(b) ITEM NO.	SMR CODE	NATIONAL STOCK NUMBER	PART NUMBER	FSCM	DESCRIPTION <i>USABLE ON CODE</i>	U/M	QTY INC IN UNIT
						GROUP 01 ANTENNA BRACKET ASSEMBLY		
2	1	XDHZZ		G2133-7116	00341	BRACKET MOUNTING	EA	1
2	2	PAHZZ	5340-00-441-9405	G2103-7115	00341	CUP, SUCTION	EA	2
2	3	XDHZZ		AN935C8L	88044	WASHER, LOCK	EA	1
2	4	PAHZZ	5310-00-934-9759	AN340C8	88044	NUT, HEXAGON	EA	3
2	5	PAHZZ	5305-00-054-6668	MSS157-43	96906	SCREW, MACHINE	EA	1
2	6	XDHZZ		G2103-7114	00341	CLIP, FUSE	EA	1
					7			

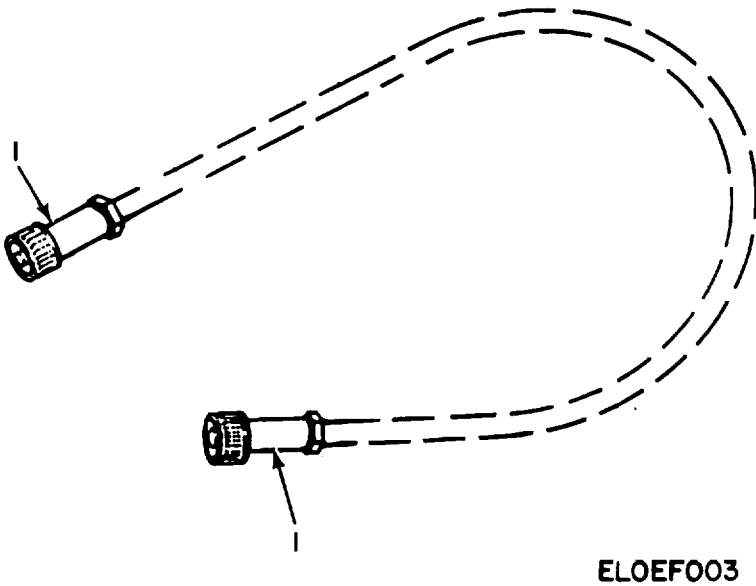
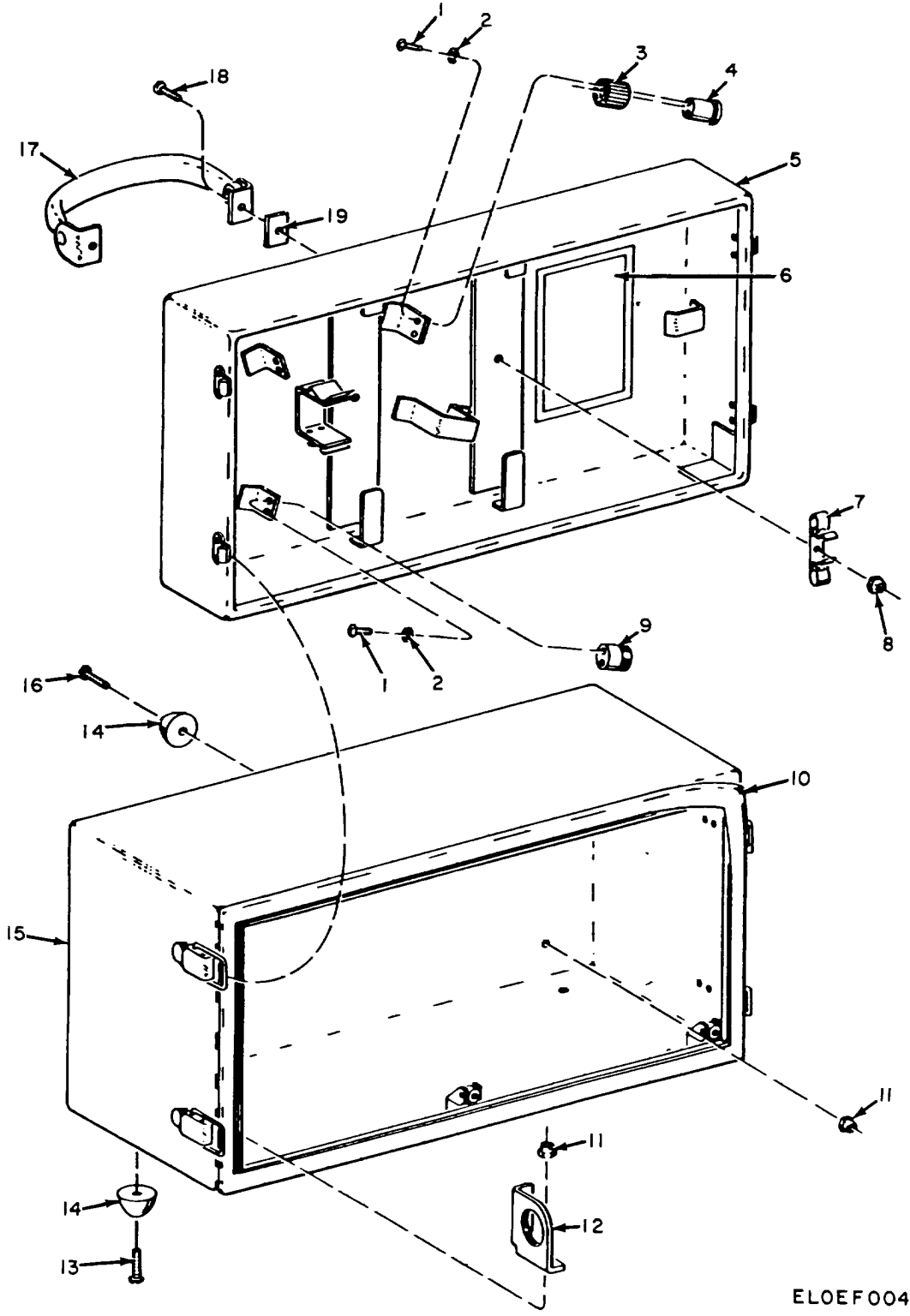


Figure 3. Cable Assembly CG-92A/U.

SECTION II

TM 11-6625-220-24P

(1) ILLUSTRATION		(2)	(3)	(4)	(5)	(6)	(7)	(8)
(a) FIG NO.	(b) ITEM NO.	SMR CODE	NATIONAL STOCK NUMBER	PART NUMBER	FSCM	DESCRIPTION <i>USABLE ON CODE</i>	U/M	QTY INC IN UNIT
3	1	PAHZZ	5935-00-928-3127	UGL1185BU	81349 9	GROUP 02 CABLE ASSEMBLY CG-2A/U CONNECTOR, RECPT	EA	2



ELOEF004

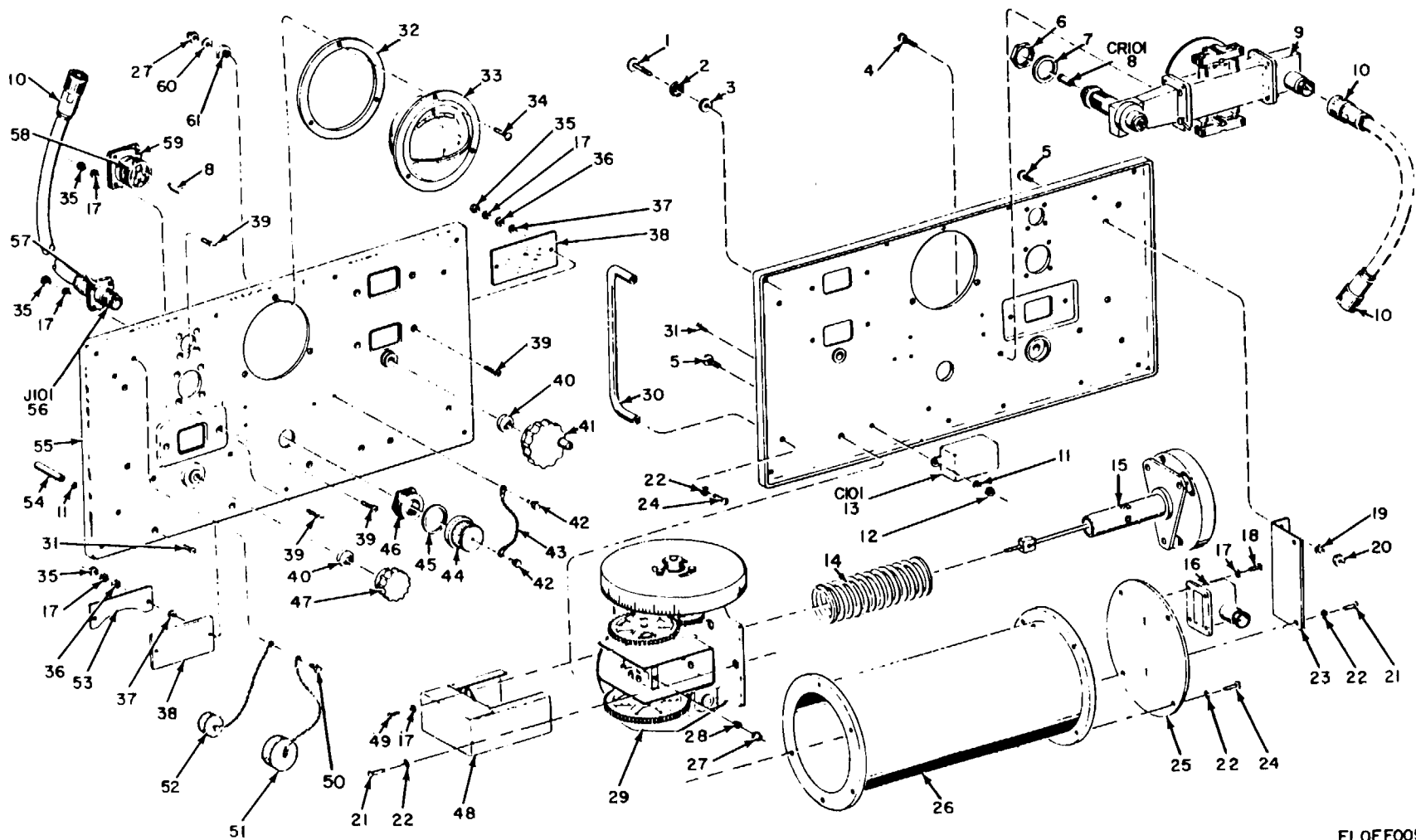
Figure 4. Case Assembly.

ELOEF004

SECTION II

TM 11-6625-220-24P

(1) ILLUSTRATION		(2)	(3)	(4)	(5)	(6) DESCRIPTION	(7)	(8)
(a) FIG NO.	(b) ITEM NO.	SMR CODE	NATIONAL STOCK NUMBER	PART NUMBER	FSCM	<i>USABLE ON CODE</i>	U/M	QTY INC IN UNIT
						GROUP 03 CASE ASSEMBLY		
4	1	PAHZZ	5305-00-054-6651	MS51957-27	96906	SCREW,MACHINE.....	EA	2
4	2	XDHZZ		AN935C6L	88044	WASHER,LOCK.....	EA	2
4	3	XDHZZ		G2103-7152	00341	RETAINER,SHELL.....	EA	1
4	4	XDHZZ		G2103-7151	00341	RETAINER,BASE.....	EA	1
4	5	XDHZZ		G2103-7233	00341	COVER ASSEMBLY.....	EA	1
4	6	XDHZZ		G2103-7127	00341	DECAL.....	EA	1
4	7	XDHZZ		G2103-7120	00341	CLIP, WRENCH.....	EA	1
4	8	XDHZZ		AN365C1032	88044	NUT,LOCKING.....	EA	2
4	9	XDHZZ		G2103-7123	00341	PLUG, DUMMY RECPT.....	EA	2
4	10	XDHZZ		G2103-7180	00341	GASKET,RUBBER.....	EA	1
4	11	XDHZZ		AN365C832	88044	NUT, LOCKING.....	EA	8
4	12	XDHZZ		G2103-7184	00341	BRACKT, MOUNTING.....	EA	1
4	13	XDHZZ		AN515C8-10	88044	SCREW,MACHINE.....	EA	2
4	14	XDHZZ		G2103-7140	00341	BUMPER,RUBBER.....	EA	8
4	15	XDHZZ		G2103-7232	00341	BOX ASSEMBLY.....	EA	1
4	16	PAHZZ	5305-00-054-6670	AN515C8-8	88044	SCREW,MACHINE.....	EA	6
4	17	XDHZZ		G2103-7234	00341	HANDLE ASSEMBLY.....	EA	2
4	18	XDHZZ		AN526C1032-10	88044	SCREW,MACHINE.....	EA	2
4	19	XDHZZ		G2103-7118	00341	GASKET,METAL.....	EA	2
					11			



ELOEF005

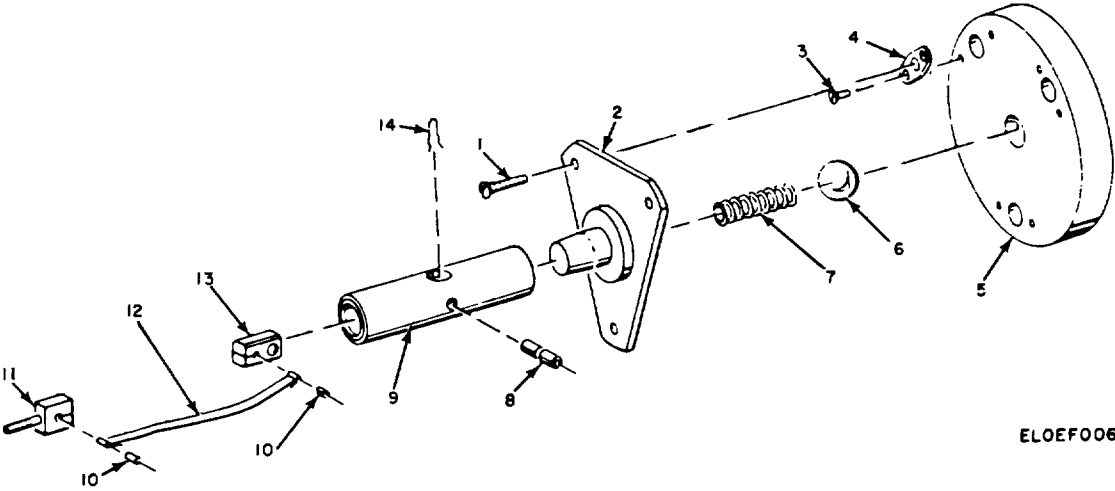
Figure 5. Panel Assembly.

(1) ILLUSTRATION		(2)	(3)	(4)	(5)	(6) DESCRIPTION	(7)	(8)
(a) FIG NO.	(b) ITEM NO.	SMR CODE	NATIONAL STOCK NUMBER	PART NUMBER	FSCM	USABLE ON CODE	U/M	QTY INC IN UNIT
						GROUP 04 PANEL ASSEMBLY		
5	1	XDHZZ		G2103-7106	00341	SCREW,CAPTIVE	EA	1
5	1	XDHZZ		G2103-7104	00341	SHELL,WIASHER	EA	1
5	3	XDHZZ		G2103-7105	00341	GASKET,WASHER	EA	1
5	4	XDHZZ		AN526C832R7	88044	SCREW, MACHTINE	EA	2
5	5	XDHZZ		AN526C1024R7	88044	SCREW,MACHINE	EA	4
5	5	XDHZZ		G2103-7183	00341	NUT,COUPLING.....	EA	1
5	6	XDHZZ		G2103-7182	00341	GASKET,CRYSTAL.....	EA	1
5	8	PAOZZ	5961-00-615-4309	JAN1N23WE	81350	SENICONDUCTOR, DIODE.....	EA	6
5	9	PAHHH	6625-00-563-5500	G2103-7204	00341	ASSEMBLY,WAVEGUIDE	EA	1
5	10	PAHZZ	5935-00-928-3127	UG1185BU	81349	CONNECTOR,RECPT	EA	3
5	11	XDHZZ		AN935C6L	88044	WASHER,LOCK	EA	4
5	12	XDHZZ		AN340C6	88044	NUT,HEXAGON	EA	2
5	13	PAHZZ	5910-0-170-2779	CP5JB1EF504K3	81349	CAPACITOR,CERAMIC	EA	1
5	14	XDHZZ		G2103-7167	00341	SPRING, HELICAL	EA	1
5	15	XDHHH		G2103-7211	00341	PISTON ASSEMBLY	EA	1
5	16	PAHZZ	6625-00-498-3975	G2103-7217	00341	TRANSDUCER.....	EA	2
5	17	PAHZZ	5310-00-193-7577	AN935C4	88044	WASHER,FLAT	EA	24
5	18	PAHZZ	5305-00-054-5648	MS51957-4	96906	SCREW, MACHINE.....	EA	8
5	19	XDHZZ		AN935C10L	88044	WASHER,LOCK	EA	2
5	20	PAHZZ	5310-00-934-9760	AN340C10	88044	NUT, HEXAGON	EA	2
5	21	XDHZZ		ANS15C8-7	88044	SCREW,MACHINE.....	EA	7
5	22	XDHZZ		AN935C8L	88044	WASHER,LOCK	EA	13
5	23	XDHZZ		G2103-7078	00341	BRACKET, CAVITY.....	EA	1
5	24	PAHZZ	5305-00-054-6668	MS51957-43	96906	SCREW,MACHINE.....	EA	6
5	25	XDHZZ		G2103-7222	00341	PLATE ASSEMBLY,FEED	EA	1
5	26	XDHZZ		G2133-7196	00341	CAVITY.....	EA	1
5	27	XDHZZ		AN365C632	88044	NUT LOCKING	EA	4
5	28	XDHZZ		G2103-7132	00341	WASHER, SHOULDER.....	EA	1
5	29	PAHHH	6625-00-563-5501	G2103-7214	00341	TUNING ASSEMBLY.....	EA	1
5	30	XDOZZ		G2103-7087	00341	HANDLE, PANEL	EA	2
5	31	PAHZZ	5305-00-763-6963	MSS51959-28	96906	SCREW,MACHINE.....	EA	4
5	32	XDHZZ		G2133-718	00341	GASKET, NONNMETALLIC	EA	1
5	33	PAHZZ	6625-00-643-2192	MR36W0200CUAR	81349	METER,ELECTRICAL	EA	1
5	34	XDHZZ		MS35027-231	96906	SCREW,MACHINE.....	EA	3
5	35	PAHZZ	5310-00-934-9748	MS35649-244	96906	NUT, LOCKING	EA	14
5	36	PAHZZ	5310-00-584-3782	AN960C4L	88044	WASHER, FLAT	EA	6
5	37	XDHZZ		G2103-7133	00341	WASHER,NONMETALLIC	EA	6
5	38	XDHZZ		G2103-7076	00341	WINDOW,PLASTIC.....	EA	2
5	39	XDHZZ		AN505C4R7	88044	SCREW,MACHINE.....	EA	14
					13			

SECTION II

TM 11-6625-220-24P

(1) ILLUSTRATION		(2)	(3)	(4)	(5)	(6) DESCRIPTION	(7)	(8)	
(a) FIG NO.	(b) ITEM NO.	SMR CODE	NATIONAL STOCK NUMBER	PART NUMBER	FSCM	<i>USABLE ON CODE</i>	U/M	QTY INC IN UNIT	
5	40	XDOZZ	5355-00-519-7702	G2103-706	00341	CAP,PANEL	EA	2	
5	41	PADZZ		MS91531-3P2M	96906	KNOB,SPINNER	EA	1	
5	42	XDHZZ		G2103-7060	00341	RIVET	EA	1	
5	43	XDHZZ		G2103-7082	00341	CHAIN,RETAINING	EA	1	
5	44	XDOZZ		G2103-7081	00341	CAP,CRYSTAL.....	EA	1	
5	45	XDOZZ		G2103-7086	00341	GASKET,CRYSTAL.....	EA	1	
5	46	XDHZZ		G2103-7102	00341	FITTING,COVER.....	EA	1	
5	47	XD0ZZ		G2103-7074	00341	KNOB	EA	1	
5	48	XDHZZ		G2103-7008	00341	COVER,DRIVER	EA	1	
5	49	PAHZZ		5305-00-054-5646	MS51957-12	96906	SCREW,MACHINE.....	EA	2
5	50	XDHZZ	2103-7085		00341	RIVET	EA	1	
5	51	XDHZZ	G2103-7084		00341	CAP-CHAIN ASSEMBLY.....	EA	1	
5	52	XDHZZ	G2103-7083		00341	CAP-CHAIN ASSEMBLY.....	EA	1	
5	53	XDHZZ	G2103-7077		00341	PLATE,ATTENUATOR	EA	1	
5	54	XDHZZ	G2103-7101		00341	POST,LOCATING.....	EA	2	
5	55	XDHZZ	G2103-7079		00341	PANEL, FRONT	EA	1	
5	56	PAHZZ	5935-00-928-3126		UG1187BU	81349	CONNECTOR,RECEPT	EA	1
5	57	XDHZZ			G2103-7103	00341	GASKET NONMETALLIC.....	EA	1
5	58	XDHZZ			G2103-7227	00341	HOLDER ASSEMBLY, CRYSTAL.....	EA	1
5	59	XDHZZ		G2133-7093	00341	GASKET NONMETALLIC.....	EA	1	
5	60	PAHZZ	5310-00-630-9857	AN960C6L	88044	WASHER,FLAT	EA	3	
5	61	XDHZZ		G2103-7052	00341	GROMMET,METER.....	EA	3	
14/15 blank)									



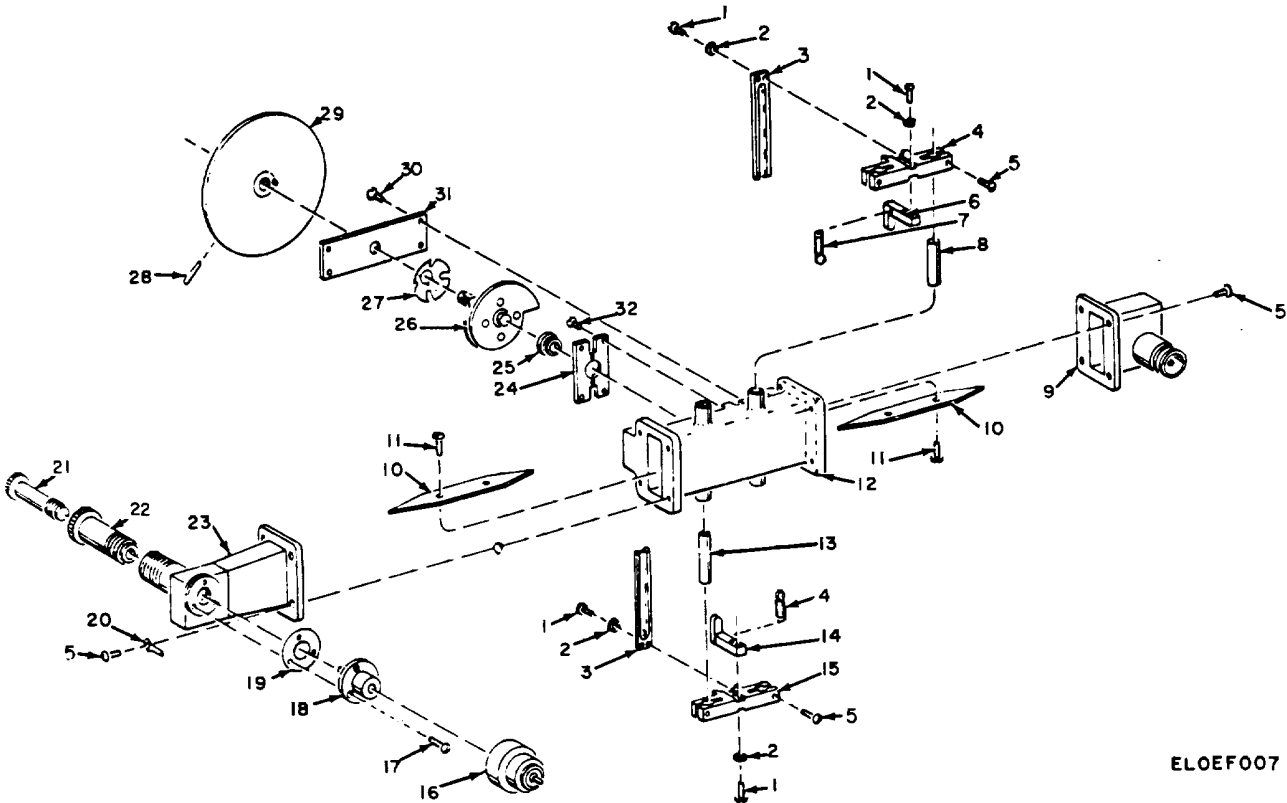
ELOEF006

Figure 6. Piston Assembly.

SECTION II

TM 11-6625-220-24P

(1) ILLUSTRATION		(2)	(3)	(4)	(5)	(6) DESCRIPTION	(7)	(8)
(a) FIG NO.	(b) ITEM NO.	SMR CODE	NATIONAL STOCK NUMBER	PART NUMBER	FSCM	<i>USABLE ON CODE</i>	U/M	QTY INC IN UNIT
						GROUP 0401 PISTON ASSEMBLY		
6	1	PAHZZ	5305-00-054-6670	AN515C8-8	88044	SCREW, MACHINE	EA	3
6	2	XDHZZ		G103-7325	00341	SOCKET ASSEMBLY, PISTON	EA	1
6	3	PAHZZ	5305-00-763-7822	MS51959-14	96906	SCREW, MACHINE	EA	6
6	4	XDHZZ		G2103-7045	00341	NUT, PLATE	EA	3
6	5	XDHZZ		G2103-7025	00341	PISTON, CAVITY	EA	1
6	6	XDHZZ		AN216CP40	88044	BALL, METAL	EA	1
6	7	XDHZZ		G2103-7028	00341	SPRING, HELICAL	EA	1
6	8	XDHZZ		G2103-7029	00341	SHAFT, TAPE MOUNTING	EA	1
6	9	XDHZZ		G2103-7036	00341	TUBE, PISTON	EA	1
6	10	XDHZZ		G2103-7131	00341	PIN, ROLL	EA	2
6	11	XDHZZ		G2103-7166	00341	BOLT, SPECIAL PURPOSE	EA	1
6	12	XDHZZ		G2103-7164	00341	TAPE	EA	1
6	13	XDHZZ		G2103-7165	00341	BLOCK, TAPE	EA	1
6	14	XDHZZ		G2103-7030	00341	CLIP, SPRING	EA	1
					17			



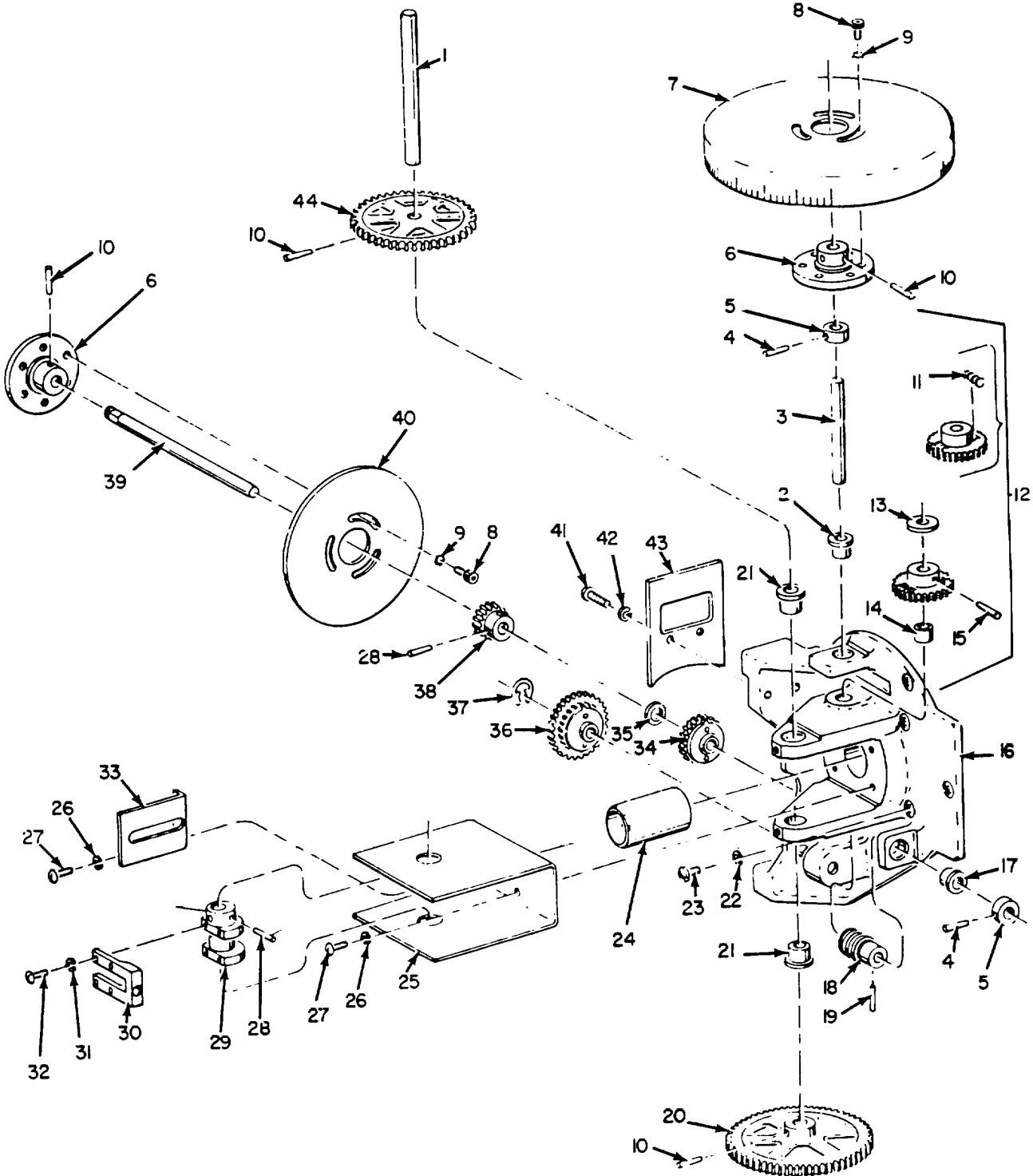
ELOEF007

Figure 7. Waveguide Assembly.

SECTION II

TM 11-6625-220-24P

(1) ILLUSTRATION		(2)	(3)	(4)	(5)	(6)	(7)	(8)
(a) FIG NO.	(b) ITEM NO.	SMR CODE	NATIONAL STOCK NUMBER	PART NUMBER	FSCM	DESCRIPTION <i>USABLE ON CODE</i>	U/M	QTY INC IN UNIT
						GROUP 0402 WAVEGUIDE ASSEMBLY		
7	1	PAHZZ	5305-00-054-5638	MS51957-4	96906	SCREW, MACHINE.....	EA	8
7	2	PAHZZ	5310-00-928-2690	AN935C2	88044	WASHER, LOCK.....	EA	8
7	3	XDHZZ		02103-7156	00341	PLATE, SLIDE.....	EA	2
7	4	XDHZZ		G2103-7157-2	00341	YOKE,SUPPORT.....	EA	1
7	5	XDHZZ		AN51SC4-6	88044	SCREW,MACHINE.....	EA	8
7	6	XDHZZ		62103-7154	00341	BAR,GUIDE.....	EA	1
7	7	XDHZZ		G2103-7148	00341	SPRING, HELICAL.....	EA	2
7	8	XDHZZ		G2103-7143-2	00341	ROD,SUPPORT.....	EA	2
7	9	PAHZZ	6625-00-498-3975	C2103-7217	00341	TRANSDUCER.....	EA	1
7	10	XOHZZ		G2103-7142-1	00341	VANE, ATTENUATING.....	EA	2
7	11	PAHZZ	5305-00-059-8235	ANS508-4-2	88044	SCREW,MACHINE.....	EA	4
7	12	XDHZZ		G2103-7066	00341	WAVEGUIDE,RF.....	EA	1
7	13	XDHZZ		G2103-7143-1	00341	ROD,SUPPORT.....	EA	2
7	14	XDHZZ		G2103-7153	00341	BAR,,GUIDE.....	EA	1
7	15	XDHZZ		G2103-7157-1	00341	YOKE, SUPPORT.....	EA	1
7	16	XDHZZ		G2103-7237	00341	CAP ASSEMBLY, CAPACITOR.....	EA	1
7	17	PAHZZ	5305-00-054-5637	AN515C2-4	88044	SCREW, MACHINE.....	EA	3
7	18	XDHZZ		G2103-7220	00341	SOCKET ASSEMBLY, CRYSTAL.....	EA	1
7	19	XDHZZ		G2103-7063	00341	CRYSTAL MOUNT,ELECTRIC.....	EA	1
7	20	XDHZZ		G2103-7135	00341	TERMINAL LUG.....	EA	1
7	21	XDHZZ		G2103-7056	00341	RETAINER, CRYSTAL.....	EA	1
7	22	XDHZZ		G2103-7055	00341	EXTRACTOR,CRYSTAL.....	EA	1
7	23	XDHZZ		02103-7058	00341	ASSEMBLY, BLOCK.....	EA	1
7	24	XDHZZ		G2103-7193	00341	ASSEMBLY, PLATE.....	EA	1
7	25	XDHZZ		G2103-7141	00341	BEARING,SLEEVE.....	EA	1
7	26	XDHZZ		G2103-7222	00341	ASSEMBLY, PLATE FEED.....	EA	1
7	27	XDHZZ		G2103-7144	00341	WASHER, SPRING.....	EA	1
7	28	XDHZZ		G2103-7134-1	00341	PIN,TAPER.....	EA	1'
7	29	XDHZZ		G2103-7223	00341	ASSEMBLY, DIAL.....	EA	1
7	30	PAHZZ	5305-00-282-2273	AN505C3-4	88044	SCREW,MACHINE.....	EA	4
7	31	XDHZZ		G2103-7067	00341	PLATE, SLIDE.....	EA	1
7	32	PAHZZ	5305-00-764-2966	AN505C2-3	88044	SCREW,MACHINE.....	EA	4
					19			



ELOEF008

Figure 8. Tuning Drive Assembly.

(1) ILLUSTRATION		(2)	(3)	(4)	(5)	(6) DESCRIPTION	(7)	(8)
(a) FIG NO.	(b) ITEM NO.	SMR CODE	NATIONAL STOCK NUMBER	PART NUMBER	FSCM	USABLE ON CODE	U/M	QTY INC IN UNIT
						GROUP 0403 TUNING DRIVE ASSEMBLY		
8	1	XDHZZ		G2103-7015	00341	SHAFT,ECCENTRIC	EA	1
8	2	XDHZZ		G2103-7003	00341	BEARING, SLEEVE	EA	1
8	3	XDHZZ		G2103-7013	00341	SHAFT, DIAL.....	EA	1
8	4	XDHZZ		G2103-7134-2	00341	PIN, TAPER.....	EA	2
8	5	XDHZZ		G2103-7024	00341	COLLAR,LOCATING	EA	2
8	6	XDHZZ		G2103-7011	00341	HUB DIAL.....	EA	2
8	7	XDHZZ		G2103-7010	00341	DIAL,FREQUENCY	EA	1
8	8	XDHZZ		G2103-7112	00341	SCREW, MACHINE.....	EA	6
8	9	XDHZZ		MS35336-3	96906	WASHER, LOCK.....	EA	6
8	10	XDHZZ		G2103-7134-4	00341	PIN, TAPER.....	EA	3
8	11	XDHHH		G2103-7117	00341	SPRING, HELICAL.....	EA	2
8	12	XDHHH		G2103-7215	00341	GEAR ASSEMBLY.ANTI-BACKLASH.....	EA	1
8	13	XDHZZ		G2103-7012	00341	BEARING, THRUST	EA	1
8	14	XDHZZ		G2103-7004	00341	BEARING, SLEEVE	EA	1
8	15	XDHZZ		G2103-7134-4	00341	PIN, TAPER.....	EA	1
8	16	XDHZZ		G2103-7001	00341	FRAME,HEAD	EA	1
8	17	XDHZZ		G2103-7002	00341	BEARING, SLEEVE	EA	1
8	18	XDHZZ		G2103-7016	00341	GEAR, ARM	EA	1
8	19	XDHZZ		G2103-7134-3	00341	PIN,TAPER.....	EA	1
8	20	XDHZZ		G2103-7046	00341	GEAR, HELICAL	EA	1
8	21	XDHZZ		G2103-7005	00341	BEARING,SLEEVE	EA	2
8	22	XDHZZ		AN935C8L	88044	WASHER,LOCK.....	EA	3
8	23	XDHZZ		AN500C8-4	88044	SCREW, MACHINE.....	EA	3
8	24	XDHZZ		G2103-7039	00341	BEARING, SLEEVE	EA	1
8	25	XDHZZ		G2103-7007	00341	BOX, TAPE DRIVE.....	EA	2
8	26	PAHZZ	5310-00-534-3782	AN935C4L	88044	WASHER, FLAT	EA	4
8	27	PAHZZ	5305-00-054-5648	MS51957	96906	SCREW, MACHINE.....	EA	4
8	28	XDHZZ		G2103-7134-5	00341	PIN TAPER.....	EA	2
8	29	XDHZZ		G2103-7041	00341	CAM,ECCENTRIC.....	EA	1
8	30	XDHZZ		G2103-1031	00341	YOKE,TAPE	EA	2
8	31	XDHZZ		AN935C3L	88044	WASHER, LOCK	EA	4
8	32	XDHZZ		AN515C3-5	88044	SCREW, MACHINE.....	EA	4
8	33	XDHZZ		G2103-7009	00341	BRACKET, GUIDE	EA	1
8	34	XDHZZ		G2103-7210	00341	GEAR ASSEMBLY	EA	1
8	35	XDHZZ		G2103-7040	00341	SPACER METALLIC	EA	1
8	36	XDHZZ		G2103-7209	00341	GEAR ASSEMBLY.COMPOUND.....	EA	1
8	37	XDHZZ		G2103-7186	00341	CLIP,RETAINING	EA	1
8	38	XDHZZ		G2103-7020	00341	GEAR SPUR	EA	1
8	39	XDHZZ		G2103-7023	00341	SHAFT,GEAR.....	EA	1
					21			

SECTION II

TM 11-6625-220-24P

(1) ILLUSTRATION		(2)	(3)	(4)	(5)	(6)	(7)	(8)
(a) FIG NO.	(b) ITEM NO.	SMR CODE	NATIONAL STOCK NUMBER	PART NUMBER	FSCM	DESCRIPTION <i>USABLE ON CODE</i>	U/M	QTY INC IN UNIT
8	40	XDHZZ		G2103-7022	00341	DIAL, FREQUENCY	EA	1
8	41	XDHZZ		AN515C6-5	88044	SCREW, MACHINE	EA	1
8	42	XDHZZ		AN935C6L	88044	WASHER, LOCK	EA	2
8	43	XDHZZ		G2103-7006	00341	PLATE, INDEX	EA	1
8	44	XDHZZ		G2103-7014	00341	GEAR, SPUR	EA	1
					22			

NATIONAL STOCK NUMBER AND PART NUMBER INDEX

PART NUMBER	FSCM	FIG. NO.	ITEM NO.	PART NUMBER	FSCM	FIG. NO.	ITEM NO.
G2103-7132	00341	5	28	G2103-7193	00341	7	24
G2103-7133	00341	5	37	G2103-7196	00341	5	26
G2103-7134-1	00341	7	28	G2103-7204	00341	5	9
G2103-7134-2	00341	8	4	G2103-7209	00341	8	36
G2103-7134-3	00341	8	19	G2103-7210	00341	8	34
G2103-7134-4	00341	8	10	G2103-7211	00341	5	15
G2103-7134-5	00341	8	15	G2103-7214	00341	5	29
G2103-7134-5	30341	8	28	G2103-7215	00341	8	12
G2103-7135	00341	7	20	G2103-7217	00341	5	16
G2103-7140	00341	4	14	G2103-7217	00341	7	9
G2103-7141	00341	7	25	G2103-7220	00341	7	18
G2103-7142-1	30341	7	10	G2103-7222	00341	5	25
G2103-7143-1	00341	7	13	G2103-7222	00341	7	26
G2103-7143-2	00341	7	8	G2103-7223	00341	7	29
G2103-7144	00341	7	27	G2103-7224	00341	1	5
G2103-7148	00341	7	7	G2103-7227	00341	5	58
G2103-7151	00341	4	4	G2103-7229	00341	1	7
G2103-7152	00341	4	3	G2103-7230	00341	1	8
G2103-7153	00341	7	14	G2103-7232	00341	4	15
G2103-7154	00341	7	6	G2103-7233	00341	4	5
G2103-7156	00341	7	3	G2103-7234	00341	4	17
G2103-7157-1	00341	7	15	G2103-7237	00341	7	16
G2103-7157-2	00341	7	4	G2103-7325	00341	6	2
G2103-7164	00341	6	12	JAN1N23WE	81350	5	8
G2103-7165	00341	6	13	MR36W02CDCUAR	81349	5	33
G2103-7166	00341	6	11	M35027-231	96906	5	34
G2103-7167	00341	5	14	MS35336-3	96906	8	9
G2103-7180	00341	4	10	MS51957-43	96906	2	5
G2103-7181	00341	5	32	MS51957-43	96906	5	24
G2103-7182	00341	5	7				
G2103-7183	30341	5	6	UG1185BU	81349	3	1
G2103-7184	00341	4	12	UG1185BU	81349	5	10
G2103-7186	00341	8	37	UG1187BU	81349	5	56

LATEST NATIONAL STOCK NUMBER ASSIGNMENTS

STOCK NUMBER	FIG. NO.	ITEM NO.	STOCK NUMBER	FIG. NO.	ITEM NO.
5310-00-193-7577	5	17	5310-00-584-3782	5	36
5305-00-282-2273	7	30	5310-00-584-3792	8	26
5355-00-519-7702	5	41	5310-00-928-2690	7	2

LATEST PART NUMBER ASSIGNMENTS

PART NUMBER	FSCM	FIG. NO.	ITEM NO.	PART NUMBER	FSCM	FIG. NO.	ITEM NO.
AN935C2	88044	7	2	MS51957-27	96906	4	1
AN935C4	88044	5	17	MS91531-3P2M	96906	4	41
MS3397-11	96906	1	6				

ADDITIONAL LATEST NATIONAL STOCK NUMBER ASSIGNMENTS

STOCK NUMBER	FIG. NO.	ITEM NO.
5305-054-6651	4	1
5305-00-05-8235	7	11
6685-00-641-8526	1	6

ADDITIONAL LATEST PART NUMBER ASSIGNMENTS

PART NUMBER	FSCM	FIG. NO.	ITEM NO.	PART NUMBER	FSCM	FIG. NO.	ITEM NO.
CP5JB1EF504K1	81349	5	13	MS51957-14	96906	5	18
MS35649-244	96906	5	1	MS51957-14	96906	8	21
MS51957-4	96906	7	1	MS51959-14	96906	6	3
MS51957-12	96906	5	49	MS51959-28	96906	5	31

NATIONAL STOCK NUMBER AND PART NUMBER INDEX

NOTE: LATEST NATIONAL STOCK NUMBER AND PART NUMBER ASSIGNMENTS ARE INCLUDED AT END OF INDEX

STOCK NUMBER	FIG. NO.	ITEM NO.	STOCK NUMBER	FIG. NO.	ITEM NO.
5303-00-054-5637	7	17	6625-00-563-5530	5	9
5305-00-054-5638	7	1	6625-40-563-5501	5	29
5305-00-054-5646	5	49	5961-00-615-4309	5	8
5305-00-054-5648	5	18	5310-00-638-9657	5	60
5305-00-054-5648	2	7	6625-00-643-2192	5	33
5305-00-054-6668	2	5	5305-00-163-6963	5	31
5305-00-054-6668	5	24	5305-00-763-1822	6	3
5305-00-054-6670	4	16	5305-00-764-2966	7	32
5305-00-054-6670	6	1	5935-00-928-3126	5	56
5910-00-170-2779	5	13	5935-00-928-3127	3	1
5985-00-241-6701	1	9	5935-00-920-3127	5	10
5995-00-272-9118	1	3	5310-00-434-9748	5	15
5340-00-441-9405	2	2	5310-00-934-9159	2	4
6625-00-498-3975	5	16	5310-00-934-9760	5	20
6625-00-498-3975	7	9			

PART NUMBER	FSCM	FIG. NO.	ITEM NO.	PART NUMBER	FSCM	FIG. NO.	ITEM NO.
AN216CP40	88044	6	6	02103-7013	00341	8	3
AN340C10	88044	5	20	G2103-7014	00341	8	44
				G2103-7015	00341	8	1
AN340C6	88044	5	12	G2103-7016	00341	8	18
AN340C8	88044	2	4	G2103-7020	00341	8	38
AN365C1032	88044	4	8	G2103-7022	00341	8	40
AN365C6323	88044	5	27	G7103-7023	00341	8	39
AN365C832	88044	4	11	G2103-7024	00341	8	5
				G2103-7025	00341	6	5
AN500C8-4	88044	9	23	G2133-7028	00341	6	7
AN505C2-3	88044	1	32	G2103-7329	00341	6	8
AN505C3-4	88044	7	30	G2103-7030	00341	6	14
				G2103-7031	00341	8	30
AN505C4R7	88044	5	39	G2103-3736	00341	6	9
				G2103-7039	00341	8	24
AN508-4-2	88044	7	11	G2103-7040	00341	8	35
AN515C2-4	88044	1	17	G2103-7041	00341	8	29
				G2103-7045	00341	6	4
AN515C3-5	88044	8	32	G2103-7046	00341	8	20
				G2103-7052	00141	5	61
				G2103-7055	00341	7	22
				G2103-7056	00341	7	21
AN515C4-6	88044	7	5	G2103-7058	00341	7	23
				G2103-7063	00341	7	19
AN515C6-5	88044	4	1	G2103-7066	00341	7	12
AN515C8-10	88044	4	13	G2103-7067	00341	7	31
AN515C8-7	88044	5	21	G2103-7068	00341	5	40
AN515C8-8	88044	4	16	G2103-7074	00341	5	41
AN515C8-8	88044	6	1	G2103-7076	00341	5	38
AN526C1024R7	88044	5	5	G2103-7071	00341	5	53
AN526C1032-10	88044	4	18	G2103-7078	00341	5	23
AN526C832R7	88044	5	4	G2103-7079	00341	5	55
AN935C10L	88044	5	19	G2103-7080	00341	5	42
				G2103-7081	00341	5	44
AN935C3L	88044	8	31	G2103-7082	00341	5	43
AN935C4L	88044	8	26	G2103-7083	00341	5	52
				G2103-7084	00341	5	51
AN935C6L	88044	4	2	G2103-7085	00341	5	50
AN935C6L	88044	5	11	G2103-1086	00341	5	45
AN935C6L	88044	8	42	G2103-7067	00341	5	30
AN935C8L	88044	2	3	G2103-7088-1	00341	1	1
AN935C8L	88044	5	22	G2103-7088-2	00341	1	2
AN935C8L	88044	5	22	G2103-7093	00341	5	59
AN960C4L	88044	5	36	G2103-7101	00341	5	54
AN960C6L	88044	5	60	G2103-7102	00341	5	46
AT680	80058	1	9	G2103-7103	00341	5	57
CG092AU	81349	1	3	G2103-7104	00341	5	2
				G2103-7105	00341	5	3
G2103-7001	00341	9	16	G2103-7106	00341	5	1
G2103-7002	00341	1	11	G2103-7112	00341	6	8
G2103-7003	00341	6	2	G2103-7114	00341	2	6
G2103-7004	00341	8	14	G2103-7115	00341	2	2
G2103-7005	00341	8	21	G2103-7116	00341	2	1
G2103-7006	00341	8	43	G2103-7117	00341	8	11
G2103-7007	00341	8	25	G2103-7118	00341	4	19
G2103-7008	00341	5	49	G2103-7120	00341	4	7
G2103-7009	00341	0	33	G2103-7123	00341	4	9
G2103-7010	00341	8	1	G2103-7126	00341	1	4
G2103-7011	00341	8	6	G2103-7127	00341	4	6
G2103-7012	00341	8	13	G2103-7131	00341	6	10

By Order of the Secretary of the Army:

BERNARD W. ROGERS
General, United States Army
Chief of Staff

Official:

J.C. PENNINGTON
Brigadier General, United States Army
The Adjutant General

Distribution:

Active Army:

USAINSCOM (2)	MAAG (1)
COE (1)	USARMIS (1)
TSG (1)	USAERDAA (1)
USAARENBD (1)	USAERDAW (1)
DARCOM (1)	Units org under fol TOE: 1 ea.
TECOM (2)	1-55
USACC (4)	1-56
TRADOC (2)	7
OS Maj Comd (4)	7-100
MDW (1)	11-16
Armies (2)	11-97
Corps (2)	11-98
Fort Gillem (10)	11-117
Fort Gordon (10)	11-500(AA-AC)
Fort Huachuca (10)	17
Fort Carson (5)	17-100
HISA (Ft Monmouth) (33)	29-1
Ft Richardson (ECOM Ofc) (2)	29-15
Svc Colleges (1)	29-16
USASIGS (5)	29-21
USAICS (3)	29-25
USAADS (2)	29-26
USAFAS (2)	29-35
USAARMS (2)	29-36
USAIS (2)	29-75
USAES (2)	29-79
AD (1) except	29-105
SAAD (30)	29-109
LBAD (14)	37
TOAD (14)	37-100
SHAD (3)	57
USA Dep (1)	57-100
Sig Sec USA Dep (1)	

ARNG: State AG (3); Units-Same as Active Army except allowance is one (1) copy per unit.

USAR: None

For explanation of abbreviations used, see AR 310-50.

RECOMMENDED CHANGES TO EQUIPMENT TECHNICAL PUBLICATIONS



THEN... JOT DOWN THE DOPE ABOUT IT ON THIS FORM, CAREFULLY TEAR IT OUT, FOLD IT AND DROP IT IN THE MAIL!

SOMETHING WRONG WITH THIS PUBLICATION?

FROM: (PRINT YOUR UNIT'S COMPLETE ADDRESS)

DATE SENT

PUBLICATION NUMBER

PUBLICATION DATE

PUBLICATION TITLE

BE EXACT... PIN-POINT WHERE IT IS

IN THIS SPACE TELL WHAT IS WRONG AND WHAT SHOULD BE DONE ABOUT IT:

PAGE NO.	PARA-GRAPH	FIGURE NO.	TABLE NO.
----------	------------	------------	-----------

TEAR ALONG PERFORATED LINE

PRINTED NAME, GRADE OR TITLE, AND TELEPHONE NUMBER

SIGN HERE:

DA FORM 2028-2 JUL 79

PREVIOUS EDITIONS ARE OBSOLETE.

P.S.—IF YOUR OUTFIT WANTS TO KNOW ABOUT YOUR RECOMMENDATION MAKE A CARBON COPY OF THIS AND GIVE IT TO YOUR HEADQUARTERS.

THE METRIC SYSTEM AND EQUIVALENTS

WEIGHT MEASURE

1 Centimeter = 10 Millimeters = 0.01 Meters = 0.3937 Inches
 1 Meter = 100 Centimeters = 1000 Millimeters = 39.37 Inches
 1 Kilometer = 1000 Meters = 0.621 Miles

WEIGHTS

1 Gram = 0.001 Kilograms = 1000 Milligrams = 0.035 Ounces
 1 Kilogram = 1000 Grams = 2.2 lb.
 1 Metric Ton = 1000 Kilograms = 1 Megagram = 1.1 Short Tons

LIQUID MEASURE

1 Milliliter = 0.001 Liters = 0.0338 Fluid Ounces
 1 Liter = 1000 Milliliters = 33.82 Fluid Ounces

SQUARE MEASURE

1 Sq. Centimeter = 100 Sq. Millimeters = 0.155 Sq. Inches
 1 Sq. Meter = 10,000 Sq. Centimeters = 10.76 Sq. Feet
 1 Sq. Kilometer = 1,000,000 Sq. Meters = 0.386 Sq. Miles

CUBIC MEASURE

1 Cu. Centimeter = 1000 Cu. Millimeters = 0.06 Cu. Inches
 1 Cu. Meter = 1,000,000 Cu. Centimeters = 35.31 Cu. Feet

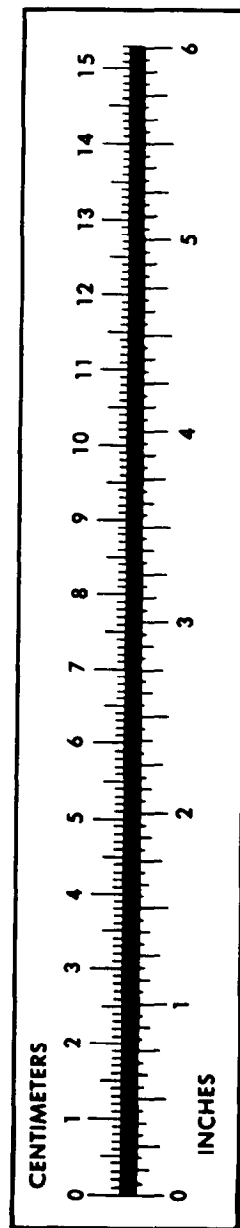
TEMPERATURE

$5/9(^{\circ}\text{F} - 32) = ^{\circ}\text{C}$
 212° Fahrenheit is equivalent to 100° Celsius
 90° Fahrenheit is equivalent to 32.2° Celsius
 32° Fahrenheit is equivalent to 0° Celsius
 $9/5^{\circ}\text{C} + 32 = ^{\circ}\text{F}$

APPROXIMATE CONVERSION FACTORS

TO CHANGE	TO	MULTIPLY BY
Inches	Centimeters	2.540
Feet	Meters	0.305
Yards	Meters	0.914
Miles	Kilometers	1.609
Square Inches	Square Centimeters	6.451
Square Feet	Square Meters	0.093
Square Yards	Square Meters	0.836
Square Miles	Square Kilometers	2.590
Acres	Square Hectometers	0.405
Cubic Feet	Cubic Meters	0.028
Cubic Yards	Cubic Meters	0.765
Fluid Ounces	Milliliters	29.573
its	Liters	0.473
arts	Liters	0.946
allons	Liters	3.785
Ounces	Grams	28.349
Pounds	Kilograms	0.454
Short Tons	Metric Tons	0.907
Pound-Feet	Newton-Meters	1.356
Pounds per Square Inch	Kilopascals	6.895
Miles per Gallon	Kilometers per Liter	0.425
Miles per Hour	Kilometers per Hour	1.609

TO CHANGE	TO	MULTIPLY BY
Centimeters	Inches	0.394
Meters	Feet	3.280
Meters	Yards	1.094
Kilometers	Miles	0.621
Square Centimeters	Square Inches	0.155
Square Meters	Square Feet	10.764
Square Meters	Square Yards	1.196
Square Kilometers	Square Miles	0.386
Square Hectometers	Acres	2.471
Cubic Meters	Cubic Feet	35.315
Cubic Meters	Cubic Yards	1.308
Milliliters	Fluid Ounces	0.034
Liters	Pints	2.113
Liters	Quarts	1.057
ers	Gallons	0.264
ms	Ounces	0.035
ograms	Pounds	2.205
Metric Tons	Short Tons	1.102
Newton-Meters	Pounds-Feet	0.738
Kilopascals	Pounds per Square Inch	0.145
ometers per Liter	Miles per Gallon	2.354
ometers per Hour	Miles per Hour	0.621



PIN: 005193-000